

147.200 + p1 103.5 REPEATER

147.200 + P1 103.5 repeater

Is a Valley floor Repeater that can be used for a nice stand alone Repeater, a link to Mt. Logan when you are not able to get in well directly and a IRLP Repeater that also has the ability to be connected to Echolink

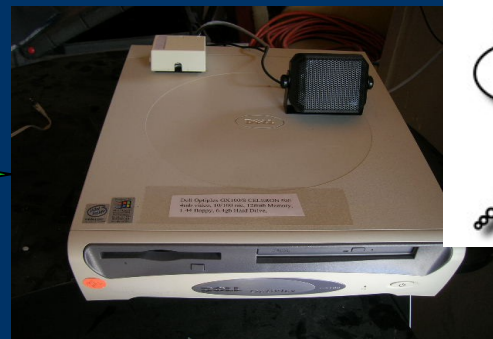


CHANGING MODES

It now has 2 modes it can be a link to Mt Logan by typing DTMF code 220.



Or an Stan-alone Repeater by typing DTMF code 221. Mt Logan will be disconnected. In this Mode You will also be able to use IRLP.



REPEATER MODE

If you want to use the 147.200 as a stand alone repeater just type the same as IRLP 221(this disconnects from Mt Logan) and as long as you don't connect to any nodes it will just be a repeater. (normally the repeater is left in this mode)

Please don't use the repeater for local traffic if you are connected to a reflector or a node. Don't rag chew from Logan to Hyrum for example while if you are connected to the Western Reflector and tie it up.

HOW TO USE IRLP

Remember to Pause 2 seconds before talking when using the IRLP.

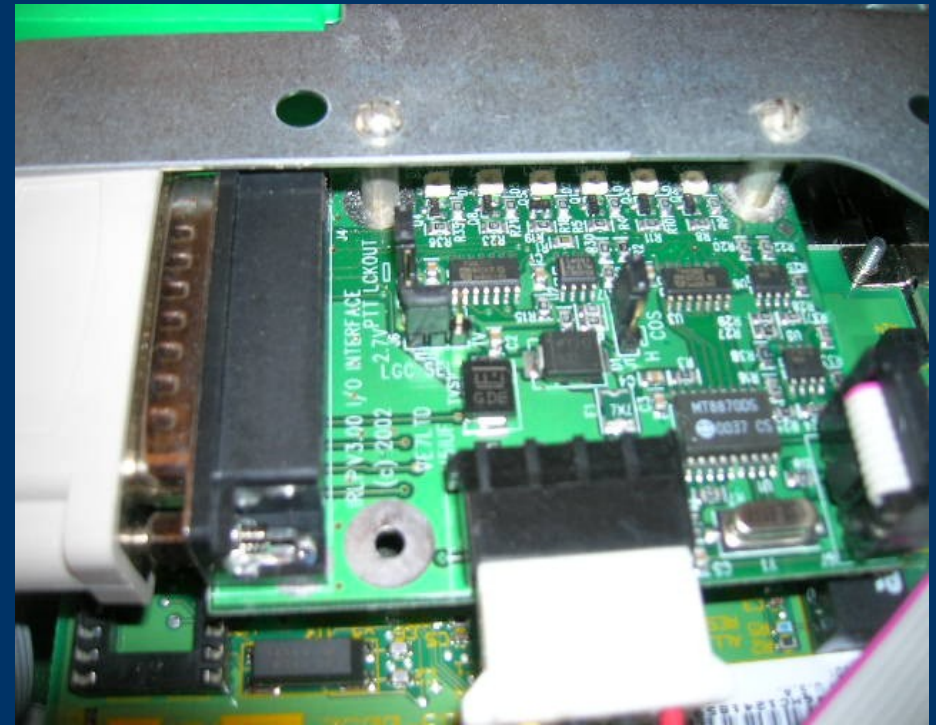
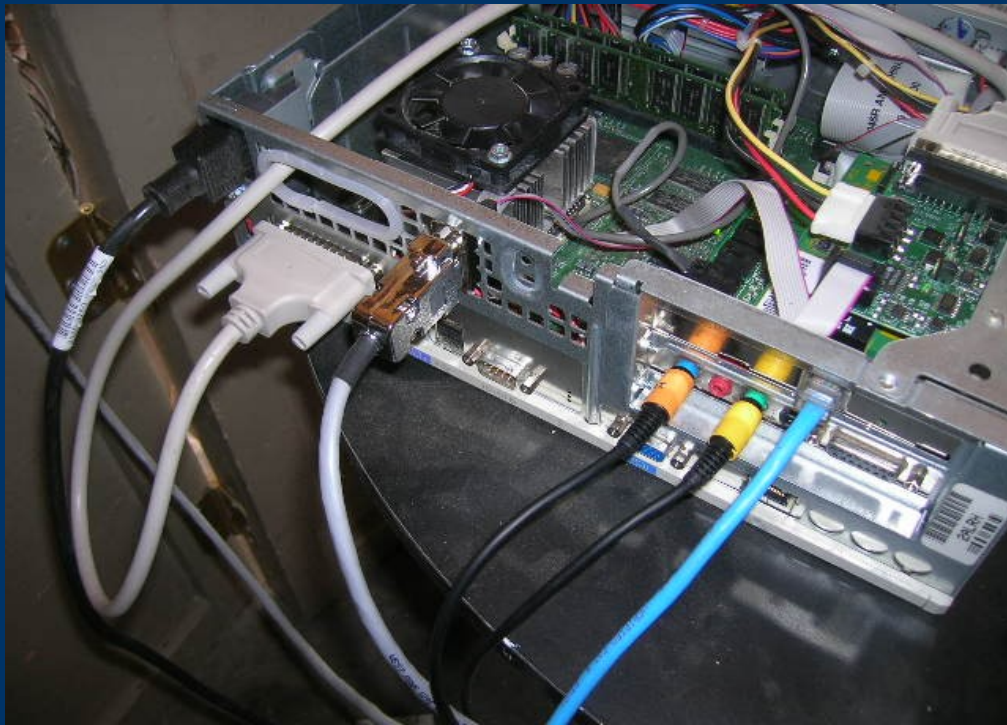
There is a list of Nodes that you can connect to on the IRLP web site <http://irlp.net/>. This Site has more instructions for proper operating practices. Once you have connected to the IRLP by typing 221.

Then you can connect to a node just type the node number then unkey and you should connect.

HOW TO USE IRLP (con't)

If you don't talk the node will hang up after about 40 min.

To disconnect manually type 73 and it will hang up.



REFLECTORS

Reflectors are sites that connect several nodes together at once they are always a 4 digit # starting with 9 and have 10 separate channels. To connect our node to Western Reflector for example type 9250 it will connect to Reflector in Las Vegas, NV.

NODES

Nodes are 4 digit # below 9000.

To connect node to node for example type 3708 it will connect to a Node I Seattle WA.

Be sure to listen for about 30 sec. before talking after you 1st connect to a reflector to make sure that the Freq is clear.

If you connect to a reflector and or a node and you don't hear anything then make sure to give your call sign phonetically and location.

Most of the time there are many people out there just listening, if you call they'll come out of the wood work.

HAVE FUN

Some busy nodes to get into are:

Western Reflector = 9250

WINS System = 9100

Local Nodes:

Preston = 3477

Logan = 4498 (currently being repaired)

Logan = 3381 (147.200)

There are normally several hundred sites across the world so try them out.

Also look up Nets that are listed in the IRLP web site.

Any Questions please email me or call me.

Ted M cArthur AC7II

ac7ii@comcast.net

(435) 770-9759

